



CMX Application Server

By Beamex

© Beamex 2024

Beamex Oy Ab

Ristisuonraitti 10

FIN-68600 Pietarsaari

Finland

Tel:

+358-10-5505000

E-mail:

sales@beamex.com

Support Portal:

<https://support.beamex.com>

Website:

<https://www.beamex.com>

Main CMX Server Service Manager Window

To open the **CMX Server Service Manager** window, double click on the CMX Server icon (🟩) found in the system tray. The main window displays a list of logged users.

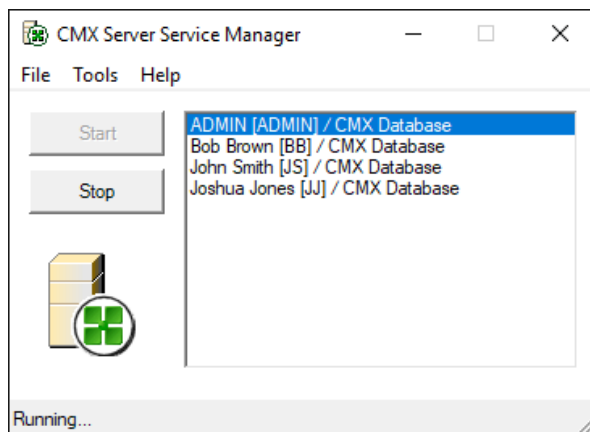


Figure 1: List of Logged Users

To see more info on a specific user, press the secondary mouse key above a user name. A pop-up menu opens and from that you can choose to see more information of the user (see example picture below).

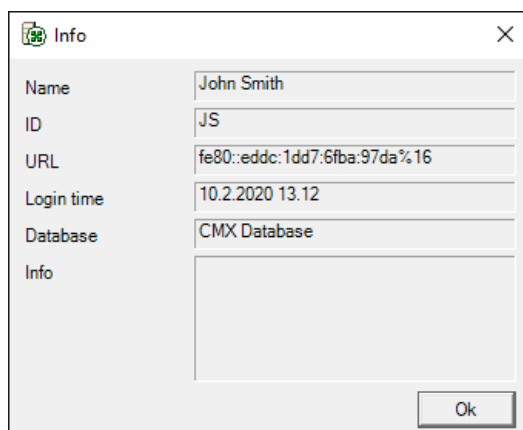


Figure 2: User Information

See the **Help, About** window for info on maximum amount of simultaneous users (license count).

Starting and Stopping CMX Server

If you have the **CMX Server Service Manager** window open, starting and stopping is easily done using the available buttons. When the Server is stopped, the CMX Server icon seen in the system tray and enlarged in the **CMX Server Service Manager** window has a red dot with a white cross on it.

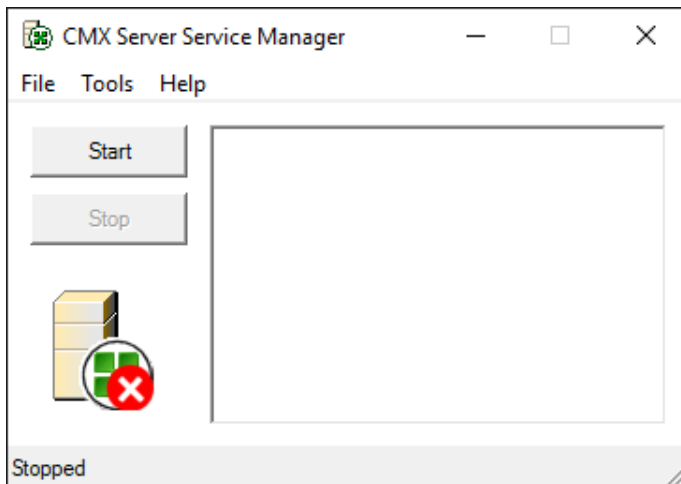


Figure 3: CMX Server Icon - Stopped

CMX Server can also be started and stopped from the operating system's **Services** window (one of the Control Panel's Administrative Tools) provided you have the user rights to do so.



Note: When stopping CMX Server, all users/clients will be disconnected and all their unsaved data lost. To avoid problems, CMX Server includes a tool for sending messages to CMX users/clients. For more info see chapter [Send Message](#).



Note: If CMX Server is going to be used in an environment where IPv4 network traffic is entirely disabled, some manual configuration needs to be done before starting CMX server. The IPv6 address which will be used for communicating to CMX server needs to be manually written to property "bindTo", in files {installationFolder}\CMXServerServiceManager.exe.config and {installationFolder}\CMX Server.exe.config. No zone index needs to be specified for the address. This can for instance be done by editing the files with Windows Notepad, elevated privileges might be needed to be able to save changes.

The Menus

File

Exit

Closes the **CMX Server Service Manager** window but keeps the server active. To reopen the window, double

click on the server icon () found in the system tray.

Tools

Send Message...

Opens a dialog window where you can write and send a message to users connected to the CMX Application Server. More info in chapter [Send Message](#).

Database Connections...

Opens a window for viewing available database connections. There is also the possibility to edit an existing database connection as well as defining a new database connection. More info in chapter [Database Connections](#).

TCP/IPPort Settings...

Opens a window for viewing/defining the TCP/IP port settings. More info in chapter [TCP/IP Port Settings](#).

General Settings...

Opens the window for viewing/defining some general settings for the CMX Application Server. More info in chapter [General Settings](#).

Help

About...

Opens CMX's About window containing license data.

Subwindows

This chapter presents all subwindows of CMX Application Server.

Send Message

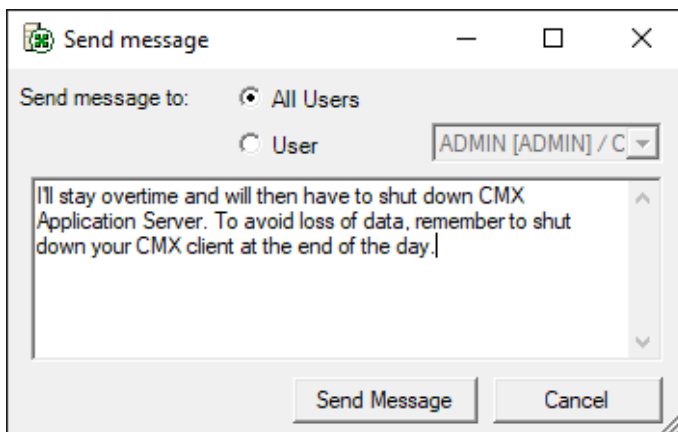


Figure 4: Send Message

A utility for sending a message to a single user or all users connected to the CMX Application Server. This is useful when you need to inform users, e.g. of a forthcoming shutdown.

Database Connections

CMX Server allows you to connect to several databases at the same time.

When you select **Tools, Database Connections** from the main CMX Server window the following type of window opens:

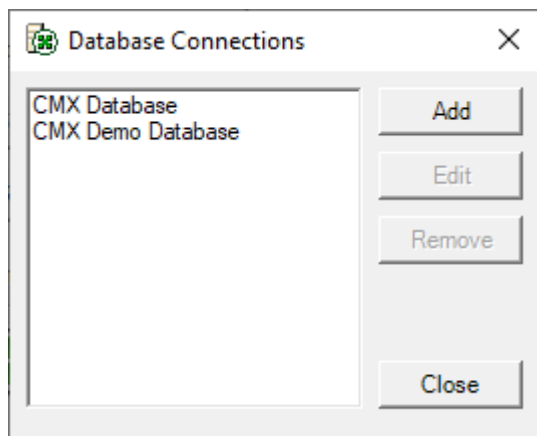


Figure 5: Database Connections

The following window opens when adding or editing a database connection:

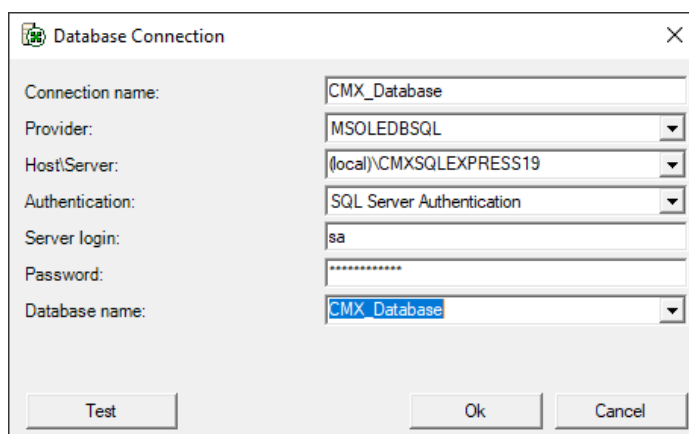


Figure 6: Adding or Editing a Database Connection

The uppermost field (**Connection Name**) is a free text field available for describing the connection.

The next two fields: **Provider** and **Host/Server** define the database type and the server CMX connects to. The contents of the Host/Server list depends on the selected provider as follows:

- For SQL servers: a list of all computers with an SQL server installed.
- For Oracle servers: all computers found in the network.

In both cases: select the Host/Server where the CMX Database Connection is installed.



Note: The **Authentication** field includes a possibility to utilize either **SQL Server Authentication** (default) or **Windows Authentication**. Use the authentication selection list to choose the one you want.

In a standard installation the **Server login** and **password** should not be changed since they are pre-entered as needed for the CMX database server. If you have attached CMX databases to an existing database server, change the login and password accordingly. Finally, select the database to be used from the list provided

TCP/IP Port Settings

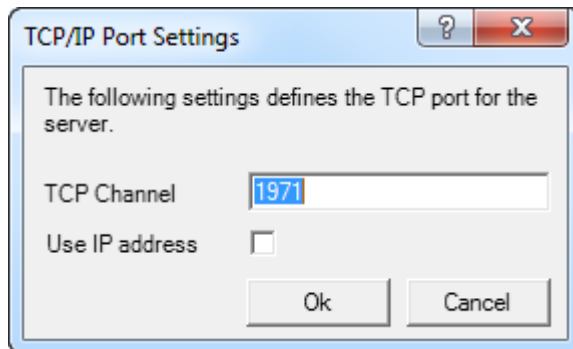


Figure 7: TCP/IP Port Settings

The default value is 1971 and should not be needlessly altered.

If another application reserves the default port, select another port and change the setting in the CMX Client software too.



Note: If CMX Server is running but does not work after computer restart, try stopping and restarting it. This may happen because the computer/server is temporarily returning a different IP during startup. To avoid this problem uncheck the **Use IP Address** checkbox.

General Settings

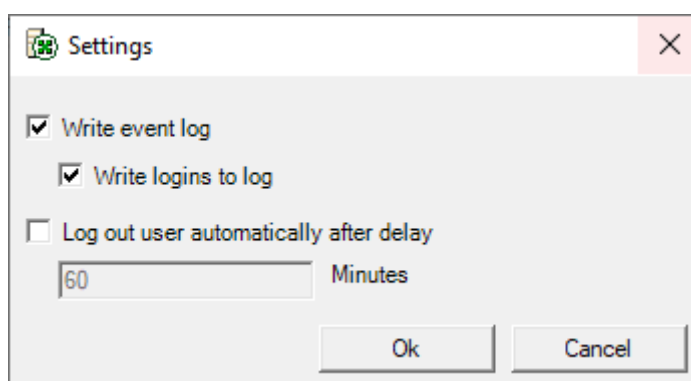


Figure 8: Settings

Most of the settings are self-explanatory. The logged event/login data is saved in the event log of the operating system.

The last option in this window allows you to define when an idle user is logged out in order to free licenses to other users. By default, automatic log out feature is not active.

Application Logging

Application logging is enabled by default in CMX Server and can be used to track or troubleshoot certain issues by analyzing the logged events.

The logging framework that is used is NLog, which is a free and flexible open-source logging framework.

The default configuration of the CMX Server Service Manager is to log info or more severe events to a file in CMX's application data directory (%appdata%\Beamex Oy Ab\CMX Calibration Management Software\logs\). The CMX Server service also does this by default but to a file in the common application data folder (%programdata%\Beamex Oy Ab\CMX Server Service\logs\).

For detailed description of default file target settings used in CMX Server, please see CMX Application Server webhelp.

Index

A

Application Logging..... 8

C

Channel..... 7

Connection name..... 5

D

Database connections..... 5

Database name..... 5

E

Event log..... 7

G

General settings..... 7

H

Host/Server..... 5

L

Log..... 7

Login..... 5, 7

M

Main windows.....

 Server running..... 2

 Server stopped..... 3

Menu structure..... 4

Messages.....

 Sending..... 5

P

Password..... 5

Port..... 7

Provider..... 5

S

Sending messages..... 5

Shut down server..... 3

Start server..... 3

Stop server..... 3

T

TCP/IP..... 7

U

User info..... 2