

## General

The Beamex DMT Dirt and Moisture Trap helps you protect your calibration equipment against contamination. Process instruments may contain moisture and dirt, which could enter the pressure source or calibrator in pneumatic calibrations. The DMT will collect impurities from the device to be tested and prevent them from entering the calibration equipment.

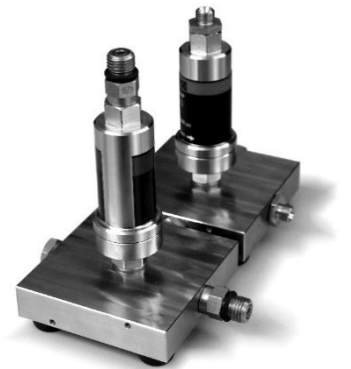
DMT is available for two pressure ranges:

- **DMT210:** Max. pressure: 210 bar (3045 psi) with Bx 1215 male fittings for Beamex 630 bar hoses.
- **DMT40:** Max. pressure: 40 bar (580 psi) with Bx G1/8" male fittings for Beamex 40 bar hoses.

Standard delivery contains:

- The DMT Dirt and Moisture Trap and a stand to keep the trap in a vertical position. The stand also works as a manifold having three pressure ports with G1/8" female threads. Two of the ports are plugged and one has a fitting for the included pressure hose.
- A pressure hose for connecting the DMT to the device to be tested. The type of hose depends on the DMT version – 40 bar hose for DMT40 and 630 bar hose for DMT210.
- A set of seals and gaskets.
- A support plate for installing the DMT to the back of a CENTRiCAL or another calibration bench.
- An adapter for the bottom of the DMT. To be used if you remove the stand and attach it e.g., to a wall.
- All items are delivered packed in a hard case.

Pressure Media: Pressurized air. Liquids are not supported.



## Using the DMT

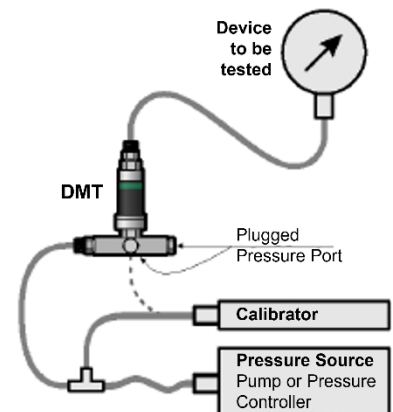
Connect the pressure source to the DMT stand and the instrument (Device to be tested) to the top of the DMT. If you have a T-hose between the DMT and the pressure source, connect the calibrator to the T-hose. If no T-hose is available, connect the calibrator to one of the DMT's plugged pressure ports using a suitable fitting and pressure hose (dotted line in the adjacent picture).

### Important!

**Always use the DMT in a vertical position. The DMT may not work if it is tilted.**

### Warning!

**Never exceed the maximum pressure. High pressure may result in serious damages to the measurement system and technicians working with the system.**



## Service

Periodically open the DMT and remove the moisture and dirt trapped inside. The frequency to clean the DMT depends on the amount of impurities in the pressure media.

The seals in the DMT may need replacement because of wear and tear. Contact Beamex for replacement parts.

### BEAMEX OY AB

Ristisuonraitti 10  
FIN-68600 Pietarsaari  
FINLAND

Tel +358 - 10 - 5505000  
E-mail sales@beamex.com  
service@beamex.com  
Internet www.beamex.com

